



# Immersion Thermostats

## Model selection summary table

Range	Model	Part No.	Control	Max. volume litres	Stability °C	Set error °C	RS 232
+5 ... 60 °C	Microterm	3000423	Cont. Ther.	10	±1	±2	No
+5 ... 100 °C	Termotronic	3000389	Cont. Ther.	20	±0.2	±2	No
+5 ... 100 °C	Tectron Bio	3473100	Analogue	20	±0.05		No
+5 ... 200 °C	Tectron 200	3473200	Analogue	20	to 100 °C ±0.05 to 200 °C ±0.1		No
+5 ... 100 °C	Digiterm 100	3000542	Digital μ	20	to 100 °C ±0.05	±1	Yes
+5 ... 200 °C	Digiterm 200	3000613	Digital μ	20	to 100 °C ±0.05 to 200 °C ±0.1	±2	Yes
0 ... 100 °C	Digit-Cool	3001373	Digital μ	20	to 100 °C ±0.05 to 0 °C ±0.05 to -10 °C ±0.1	±1	Yes
+5 ... 300 °C	Tectron-L	3000843	Electemp Digital	20	to 100 °C ±0.1 to 200 °C ±0.2 to 300 °C ±0.5	±1 ±2 ±3	No No No
+5 ... 100 °C	Tectron-Bio 20	3001287	Analogue	20	±0.05		No
+5 ... 100 °C	Tectron-Bio 27	3001288	Analogue	27	±0.05		No
+5 ... 200 °C	Tectron-200 20	3001289	Analogue	20	±0.1		No
+5 ... 200 °C	Tectron-200 27	3001290	Analogue	27	±0.1		No
+5 ... 100 °C	Digiterm-100 20	3001291	Digital μ	20	±0.05	±1	Yes
+5 ... 100 °C	Digiterm-100 27	3001292	Digital μ	27	±0.05	±1	Yes
+5 ... 200 °C	Digiterm-200 20	3001293	Digital μ	20	±0.1	±2	Yes
+5 ... 200 °C	Digiterm-200 27	3001294	Digital μ	27	±0.1	±2	Yes
+5 ... 200 °C	Ultraterm-200	6000383	Digital μ	8	to 100 °C ±0.05 to 200 °C ±0.1	±1 ±2	Yes Yes
-10 ... 100 °C	Frigiterm-10	6000382	Digital μ	8	to 100 °C ±0.05 to 0 °C ±0.05 to -10 °C ±0.1	±1	Yes
-30 ... 100 °C	Frigiterm-30	6001091	Digital μ	8	to 100 °C ±0.05 to 0 °C ±0.05 to -10 °C ±0.1	±1	Yes
Refrigeration units							
-20 ... 20 °C	Frigedor	3000778	No controller	20			No
-20 ... 20 °C	Frigedor-Reg	3001214	Digital μ	20	±1.5	±1.5	No

μ: with microprocessor.  
+5: ambiente +5 °C

RECOMMENDED FLUIDS  
FOR WORKING  
TEMPERATURES -40°C  
TO 200°C





## Immersion thermostat ‘Microterm’

### Applications

For tests in tanks up to 10 litres capacity.

### Control Panel

Mains switch with “ON” indicator lamp.  
Heater in operation indicator lamp.  
Electrical contact thermometer connector.

### Features

Adjustable temperature range from ambient  
+5 °C to 60 °C.

Maximum volume that can maintain the maximum temperature: 10 litres. Temperature sensor: Contact thermometer.

Heater element made of INCOLOY stainless steel. Electronic heater power supply. Stirring system: Motor with direct drive stir-bar.

Main exterior case made of steel coated in a corrosion resistant epoxy. All parts in contact with liquids are made of AISI 304 stainless steel.

Fixings: Clamp and finger screw to clamp on the side of the tank.

Minimum fixing depth 16 cm.



### Model

Part No.	Temp. Range °C	Stability °C	Height/Width/Depth (external)cm	Power W	Weight Kg
3000423	Amb. +5 to 60	±1	28 (with therm.) -8 -12	500	1.1

Comes complete with contact thermometer.

### ACCESSORIES

Transparent methacrylate tank.

Designed especially for the “Microterm” immersion thermostat. (Raised back)

Part No.	Capacity litres	Max Temp. °C	H/W/D (external) cm	No. Racks	Wt Kg
1000397	7	60	10 20 38	4	2

Rack for 24 haemolysis tubes  
Tube dia. up to 13 mm.  
Made of AISI 304 stainless steel.  
Part No. 1002532

Rack for 14 test tubes  
Tube dia. up to 16 mm.  
Made of AISI 304 stainless steel.  
Part No. 1002531



## Immersion thermostat “Termotronic”

### Features

Adjustable temperatures from Ambient

+5 °C to 100 °C

Maximum volume to maximum working temperature: 20 litres.

Temperature sensor: Contact thermometer.

Heater element made of stainless steel

INCOLOY. Electronic heater power supply.

Stirring system: Motor with direct drive stir-bar.

Main exterior case made of steel coated in a

corrosion resistant epoxy. All parts in contact with liquids are made of AISI 304 stainless steel.

Fixings: Clamp and finger screw to hold the unit on the side of the tank.

Minimum fixing depth 14 cm.

### Control Panel

Mains switch with indicator “ON” lamp.

Heater power control.

Connector to the contact thermometer.

### Model

Part No.	Temp. Range °C	Stability °C	H/W/D (external) cm	Pump pressure flow	Power W	Wt Kg
3000389	Amb +5 to 100	±0.2	28 (with term.) -11 -16	150 mbar-5 l/min.	1000	2.5

Comes complete with a contact thermometer, height measured includes thermometer.

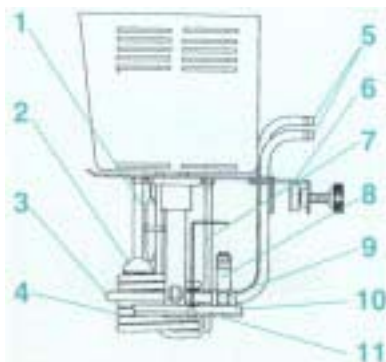




# Analogue and Digitally Controlled Immersion Thermostats

... The most precise solution for maintaining constant liquid temperatures ...

**SAFETY**  
DIN 12879.2. Standard: Adjustable over temperature thermostat with manual reset and low liquid level heater cut off.



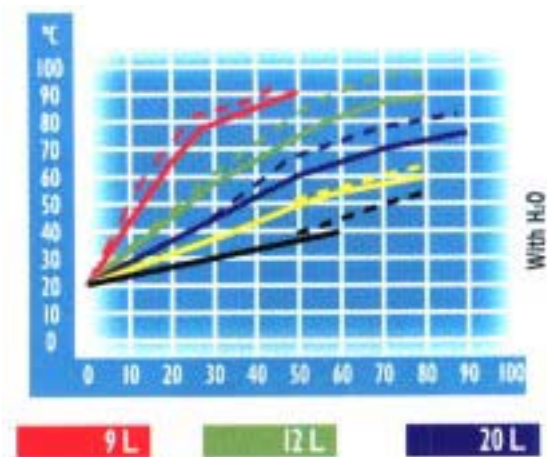
SCHEMATIC SHOWING ALL PARTS THAT ARE IN CONTACT WITH LIQUID.

1. Safety over temperature thermostat.
2. Liquid level float.
3. Cooling coil.
4. Heating element made of stainless steel INCOLOY that can withstand high temperatures and is corrosion resistant.
5. Refrigeration coil connections.
6. Clamp support.
7. Pt 100 temperature probe
8. Pump outlet for external circulation.
9. Agitation pump outlet.
10. Circulation pump.
11. Flow rate pump valve.

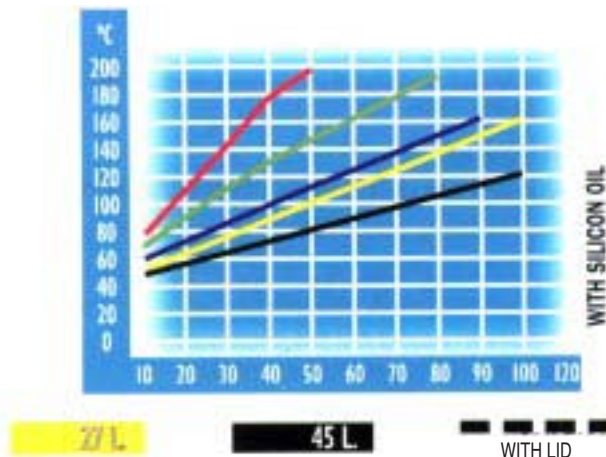


Flow connections  
A. External circulation  
B. Internal stirring within the tank.

TEMPERATURE RATE RISE FOR DIFFERENT TANK VOLUMES USING STAINLESS STEEL TANKS MADE BY SELECTA.



Temperature rate rise curve of (1 KW) for different tank volumes.



Temperature rate rise curve of (2 KW) for different tank volumes.



## Immersion thermostat 'Tectron Bio' and 'Tectron 200'

"TECTRON BIO": ADJUSTABLE TEMPERATURES FROM AMBIENT +5°C to 100°C.

"TECTRON 200": ADJUSTABLE TEMPERATURES FROM AMBIENT +5°C to 200°C.

### Features

Temperature sensor: Pt 100 probe. Maximum volume at maximum attainable temperature: 20 litres. Circulation pump with external and internal adjustable flow. Cooling coil for maintaining ambient temperature using tap water. External case made of metal with a epoxy corrosive resistant coating, all parts in contact with liquid are made of AISI 304 stainless steel. Fixed to the tank by a clamp and screw nut at the back or extension bridge that can be added as an accessory. Minimum fixing height 14 cm.

### Safety

Conforms to the DIN 128792 Standard. Adjustable safety over temperature thermostat and low liquid level cut off that disconnects power to the heater if activated.

### Control Panel

Main power switch with power "ON" indicator lamp.



"Tectron Bio", Part No. 3473100 with pre-set fixed temperature range of: 25, 30, 37 and 56 °C, and linear control from 0 °C to 100 °C.



"Tectron 200", Part No. 3473200 with two ranges of temperature control from 0-100 °C and 100 to 200 °C.

Temperature selector.  
Adjustable fine control OFFSET of 1 °C.  
Heater on indicator lamp.  
Indicator lamp showing alarm status.

Temperature selector ranges:  
"Tectron Bio": 25, 30, 37 and 56 °C, and linear control from 0 to 100 °C.  
"Tectron 200": linear with two ranges 0 to 100 °C and 100 to 200 °C.

### Models

Models	Part No.	Temperature control Range °C	Stability °C	Height/Width/Depth (external) cm	Pump Pressure/Flow H <sub>2</sub> O	Power W	Weight Kg
TECTRON BIO	3473100	Amb.+5 to 100 External cooling from 0 to 100	±0.05	28 18 19	150 mbar-12 l/min.	1050	3
TECTRON 200	3473200	Amb.+5 to 200 External cooling from 0 to 200	to 100 °C ±0.05 to 200 °C ±0.1	28 18 19	150 mbar-12 l/min.	2050	3.2

A check thermometer location position and thermometer come as standard.

### ACCESSORIES TECTRON BIO

Transparent methacrylate tank specially designed for clinical assays "Clinic-Term".

Part No.	Capacity litres	Max. Temp. °C	H / W / D (external) cm	No. of Racks	Wt Kg
1000544	8	60	14 16 39	4	2

Racks for the "Clinic-Term" made of AISI 304 stainless steel.

Racks for 50 micro-tubes of 11mm dia. Part No. 1000546

Racks for 50 haemolysis tubes and coagulation tests with a diameter of 13 mm. Part No. 1000545

Racks for 14 tubes with a diameter of 18mm. Part No. 1000547

Racks for 8 cuvettes for spectrophotometers of 10 mm square, various tests, Part No. 1000548





# Microprocessor Controlled Immersion Thermostat

DIGITAL TEMPERATURE DISPLAY AND CONTROL

STABILITY: 100°C ±0.05 °C. SET ERROR: ±1 °C. RESOLUTION: 0.1 °C.

STABILITY: 200°C ±0.1 °C. SET ERROR: ±2 °C. RESOLUTION: 0.1 °C.

..... Precise thermostat control .....

DIGITERM 100 – DIGITERM 200  
ULTRATERM 200  
FRIGITERM-10 – FRIGITERM-30  
DIGIT-COOL

## Features

Microprocessor temperature control . The following parameters can be configured and shown on the LCD display:

- Maximum and minimum temperature limits.
- Select °C or °F
- Display resolution 0.1 °C
- External temperature (Probe).
- Over temperature set limits for alarm.
- Calibration
- Low liquid level indicator.

Temperature probe Pt 100.

Heating element made of stainless steel INCOLOY resistant to high temperatures and corrosive environments.

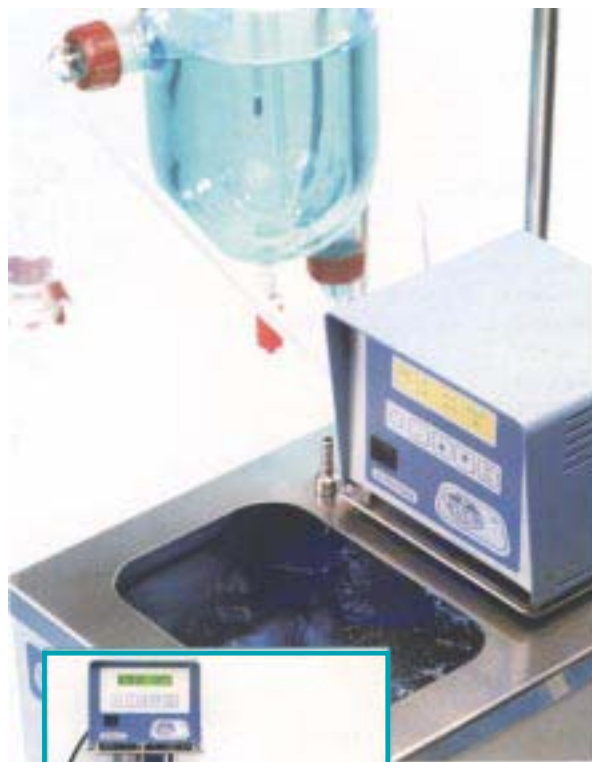
Circulation Pump with adjustable flow rate suitable for external temperature control for: (Polarimeters, refractometers and viscometers, etc).

Cooling coil to maintain ambient temperatures using tap water.

External temperature control connection using a Pt 100 probe.

RS-232 interface for computer control or printing data.

External metal case coated in a corrosive resistant epoxy. All parts in contact with liquid are made of AISI 304 stainless steel.



Units with a RS232 connection can be controlled by a computer and can print out parameters

## SAFETY

DIN 12879.2. Standard.

Alarms: over temperature.

Low liquid level float indicator.

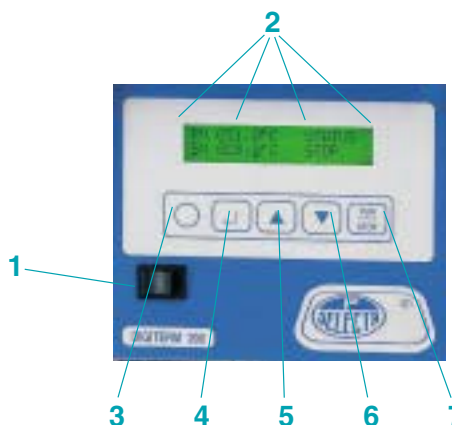
Adjustable over temperature safety thermostat with manual reset.

Power failure alarm.

**DIGITAL CONTROL AND LCD DISPLAY THAT CLEARLY SHOW THE SET AND LIVE PARAMETERS**

## Control Panel

- 1.- Main power switch.
- 2.- LCD Display showing working parameters.
- 3.- Pushbutton configuration selector.
- 4.- Push button parameter selection.
- 5.- Push button increase set value.
- 6.- Push button decrease set value.
- 7.- Start / Stop, push button.





## Digitally controlled immersion thermostat 'Digiterm 100' and 'Digiterm 200'

DIGITERM100, ADJUSTABLE TEMPERATURE FROM AMBIENT +5°C to 100°C.  
 DIGITERM 200, ADJUSTABLE TEMPERATURE FROM AMBIENT+5°C to 200°C  
 CONFORMS TO THE DIN 12879. CLASS 2. SAFETY STANDARD.



### Features

Maximum working volume to maintain maximum temperature: 20 litres.  
 A clamp and finger screw attach the unit to the tank, alternatively the extendible support bridge accessory can be used.  
 Minimum fixing depth of the tank: 14 cm.  
 Output: RS-232 that can be used direct with a printer or computer.

### Models

	Part No.	Temperature control Range °C	Stability °C	Height/Width/Depth (external) cm			Pump Pressure/Flow H <sub>2</sub> O	Power W	Weight Kg
DIGITERM 100	3000542	Amb.+5 to 100 External cooling from -20 to 100	±0.05	28	18	19	150 mbar-12 l/min.	1060	3.9
DIGITERM 200	3000613	Amb.+5 to 200 External cooling from -20 to 200	to 100 °C ±0.05 to 200 °C ±0.1	28	18	19	150 mbar-12 l/min.	2060	4.5

## Recirculation Immersion Thermostat 'Ultraterm 200'

ADJUSTABLE TEMPERATURES FROM AMBIENT+5 °C to 200 °C.  
 CONFORMS TO THE DIN 12879. CLASS 2. SAFETY STANDARD.



### Features

Maximum working volume to maintain maximum temperature: 8 litres.  
 AISI 304 stainless steel top and lid with an inner tank of AISI 310 stainless steel.  
 Complete with a pump for internal and external liquid circulation with push on tube connectors for inlet and outlet. A drain tap is placed at the side of the unit. A cooling coil to maintain ambient temperatures using tap water is also provided. A RS232 interface for print out or computer control comes as standard.

### Models

Part No.	Capacity litres	Temp. range °C	Stability °C	Height/Width/Depth (internal) cm			Height/Width/Depth (external) cm			Pump Pres./Flow H <sub>2</sub> O	Power W	Weight Kg
6000383	8	Amb. +5 to 200 With external cooling from -20 to 200	up to 100 °C ±0.05 up to 200 °C ±0.1	14	20	14	18	36	28	150 mbar-12 l/min.	1060	9.5



## Refrigerated re-circulation thermostat 'Frigiterm -10' and 'Frigiterm -30'

ADJUSTABLE TEMPERATURE FROM -10 °C to 100 °C. STABILITY: 0 °C to 100 °C, ±0.05 °C / -10 °C, ±0.1 °C.  
ADJUSTABLE TEMPERATURE FROM -30 °C to 100 °C. STABILITY: 0 °C to 100 °C, ±0.05 °C / -30 °C, ±0.2 °C.  
SET ERROR : ±1 °C. RESOLUTION: 0.1 °C.  
CONFORMS TO THE DIN 12879. CLASS 2 SAFETY STANDARD.

### Features

Maximum working volume to maintain maximum temperature: 8 litres.  
AISI 304 stainless steel top and lid with an inner tank of AISI 310 stainless steel.  
Complete with a pump for internal and external liquid circulation with push on tube connectors for inlet and out let. A drain tap is placed at the side of the unit.  
A cooling coil to maintain ambient temperatures using tap water is also provided. A hermetically sealed CFC free compressor with a ventilated evaporator is mounted on anti-vibration mounts. A RS232 interface for connection to a printer or computer control comes as standard.



### Models

	Part No.	Capacity litres	Temp. range °C	Height/Width/Depth (internal) cm	Height/Width/Depth (external) cm	Pump Pres./Flow H <sub>2</sub> O	Power W	Comp H.P	Wt Kg
FRIGITERM-10	6000382	8	-10 + 100	12 20 14	26 66 44	150 mbar-12 l/min	1150	1/8	28
FRIGITERM-30	6001091	8	-30 + 100	12 20 14	26 66 44	150 mbar-12 l/min	1460	3/8	30

## High temperature immersion thermostat 'Tectron-L'

ADJUSTABLE TEMPERATURE FROM AMBIENT +5 °C to 300 °C.  
HEATING AND CIRCULATION UNIT CONTROLLED BY THE "ELECTEMP".  
CONFORMS TO THE DIN 12879. CLASS 2. SAFETY STANDARD.

..... Temperatures up to 300 °C .....

### Features

Temperature sensor probe Pt 100.  
Maximum volume to maintain the maximum temperature: 20 litres. Heating element made of INCOLOY stainless steel that is resistant to high temperatures and corrosion.  
Adjustable pump rate for internal and external circulation. To maintain ambient conditions a cooling coil with the use of tap water is fitted.  
An adjustable safety thermostat with manual reset cuts off power to the heater in the case of over temperature or low liquid levels. (DIN 12879. Class 2).  
A plug at the back allows for the connection of the "Electemp" controller.  
External case made of metal with an epoxy

corrosive resistant coating, all parts in contact with liquid are made of AISI 304 stainless steel. Fixed to the tank by a clamp nut at the back or extension bridge that can be added as an accessory. Minimum tank depth required 20 cm.

### Control Panel

Mains switch with "ON" indicator lamp. An indicator lamp shows when the circulation and heater are on.  
If the safety cut off fails due to over temperature or low liquid level an indicator lamp comes on.



### Model

Part No.	Temp. range	Stability 100/200/300 °C	Max/Min (immersion) cm	Height/Width/Depth (external) cm	Pump Pres./Flow H <sub>2</sub> O	Power W	Weight Kg
3000843	+5 +300	±0.1/±0.2/±0.5	19 12	33 16 19	150 mbar-12 l/min	3060	4.2

NOTE: The "Electemp" is obligatory for the control of the TECTRON-. Part No. 3000887.



## Immersion Thermostat Controller 'Tectron - L'



Temperature controller "Electemp"

### Features

Digital temperature control, P.I.D. operation, controlled by a microprocessor that is configurable to the users requirements. Temperature range from -150 °C up to 1300 °C.

Temperature sensor: Thermo-resistance or thermocouple

Functions: ON - OFF / P.D.I.

Auto tuning: Automatically adjusts for the sample medium ( solid, liquid or gas )

Part No.	Height/Width/Depth (external) cm	Max. Power(at 230V) W	Weight Kg
3000887	10.5 13.5 21	3100	1.250

## Refrigerated immersion cooling coils for baths 'Frigedor and Frigedor-Reg'

TEMPERATURES FROM -20 °C +20 °C.

### Applications

Designed for bath applications that require below ambient temperatures.

### Features

The unit is bench mountable and contains within the epoxy coated case a CFC free hermetically sealed compressor with condenser and evaporator, the cooling coil is made of AISI 304 stainless steel.

### COIL DIMENSIONS

Refrigerated immersion length: 900 mm.

Cooling coil diameter: 45 mm.

Coil length: 150 mm.

### Model FRIGEDOR

No temperature controller incorporated. Continually operates the compressor.

### Control panel

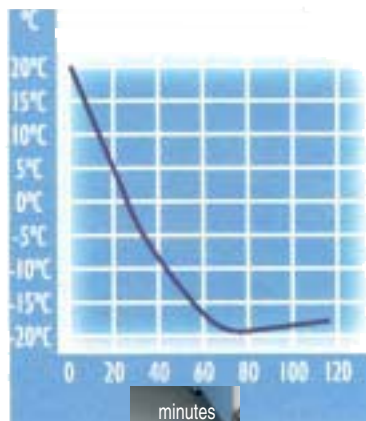
Mains switch with "ON" indicator lamp.

### Model FRIGEDOR REG

Equipped with a temperature controller with digital control and display. Includes a Pt 100 temperature probe.

### Control Panel

Mains switch with indicator "ON" lamp. Digital controller with push buttons, connector for the Pt 100 temperature probe.



Graph showing the cooling performance of the "Frigedor" units in a 20 litres bath.



Models	Part No.	Temp. Range °C	Stability °C	Height/Width/Depth (external) cm	Cooling Power	Power W	Weight Kg
FRIGEDOR	3000778	-20 to +20	-	41 21 34	-20 = 50 W	285	14
FRIGEDOR-REG	3001214	-20 to +20	±1.5	41 21 34	-20 = 50 W	285	14



# Precise Stirred Baths with Immersion Thermostat

## Integrated solutions using the immersion thermostats 'Tectron' and 'Digitem'

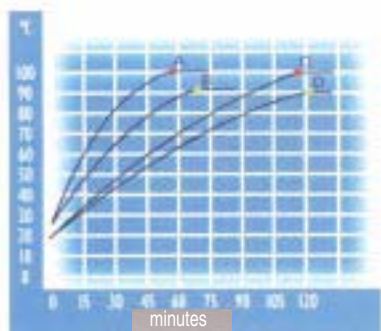
ADJUSTABLE TEMPERATURE FROM AMBIENT +5 °C to 100 °C or 200 °C.  
CAPACITY FROM 20 to 27 LITRES.

### Applications

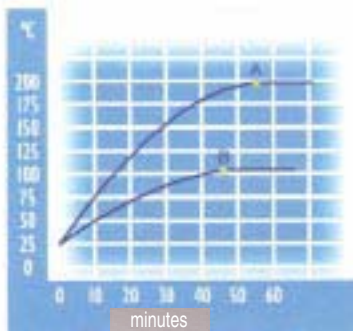
Incubation, Enzyme reactions, fermentation. Cell culture and general laboratory applications and research.

### Features

Double skinned baths with an AISI 310 stainless steel interior tank with an AISI 304 stainless steel exterior, for convenience, handles at the side and drain tap are provided as standard. A detachable immersion thermostat for controlling stirring and temperature are incorporated. A cooling coil with the use of tap water can be used to maintain ambient temperatures. The pump, for re-circulation applications, also has external in-let and out-let connections.



Graph of temperature and time for the Tectron-Digitem 100 and 200, units with capacity of 20 litres. Tests completed with water:  
A. Tectron-Digitem 200 with lid at 100 °C.  
B. Tectron-Digitem 200 no lid at 90 °C.  
C. Tectron-Digitem 100 with lid at 100 °C.  
D. Tectron-Digitem 100 no lid at 90 °C.



Graph of temperature and time for the Tectron-Digitem 100 and 200, units with capacity of 20 litres. Tests completed with Silicon oil:  
A. Tectron-Digitem 200 with lid at 200 °C.  
B. Tectron-Digitem 200 with lid at 100 °C.

27 litre capacity baths take 20% more time to reach the same temperatures.

## Stirring baths equipped with the 'Tectron-Bio' or 'Tectron-200'

TECTRON-BIO: ANALOGUE CONTROL  
LINEAR TEMPERATURE TO 100 °C AND FIXED TEMPERATURE SETTINGS OF: 25, 30, 37 and 56 °C. STABILITY:  $\pm 0.05$  °C.  
TECTRON-200: ANALOGUE CONTROL LINEAR TEMPERATURE FROM 0 to 100 °C and 0 to 200 °C. STABILITY  $\pm 0.1$  °C.

SAFETY: CONFORMS TO THE DIN 12879.2 STANDARD. SAFETY CUT OFF OF THE HEATER IF THE TEMPERATURE EXCEEDS THE SET SAFETY VALUE OR IF THE LIQUID LEVEL IS LOW.

### Control panel

Mains switch with indicator "ON" lamp.  
Temperature selection control. Fine temperature control to 1 °C.  
Indicator lamp that the heater is on. Alarm lamp showing over temperature failure.



Models	Part No.	Temp. Max. °C	Capacity litres	Height/Width/Depth (internal) cm	Height/Width/Depth (external) cm	Pump Pres. mbar	Flow H <sub>2</sub> O l/min	Power W	Weight Kg
TECTRON-BIO 20	3001287	100	20	15 30 29	20 55 35	150	12	1060	9.2
TECTRON-BIO 27	3001288	100	27	20 30 29	25 55 35	150	12	1060	10.8
TECTRON-200 20	3001289	200	20	15 30 29	20 55 35	150	12	2060	9.2
TECTRON-200 27	3001290	200	27	20 30 29	25 55 35	150	12	2060	10.8



## Stirring baths equipped with immersion thermostat 'Digiterm-100' or 'Digiterm-200'

DIGITAL TEMPERATURE CONTROL AND DISPLAY.

DIGITERM 100: TEMP. RANGE AMB. +5 °C to 100 °C. STABILITY ±0.05 °C. SET ERROR ±1 °C. RESOLUTION 0.1 °C. DIGITERM

200: TEMP. RANGE AMB. +5 °C to 200 °C. STABILITY ±0.1 °C. SET ERROR ±2 °C. RESOLUTION 0.1 °C.

SAFETY: CONFORMS TO THE DIN 12879.2 STANDARD.  
SAFETY CUT OFF OF THE HEATER IF THE TEMPERATURE EXCEEDS THE SET SAFETY VALUE OR IF THE LIQUID LEVEL IS LOW.

### Features

Microprocessor temperature control . The following parameters can be configured and shown on the LCD display.

- Maximum and minimum temperature limits.
- Select °C or °F.
- Display resolution 0.1 °C
- External temperature (Probe).
- Over temperature set limits for alarm.
- Calibration.
- Low liquid level indicator.

Temperature probe Pt 100.

Heating element made of stainless steel INCOLOY, resistant to high temperatures and corrosive environments.

Circulation Pump with adjustable flow rate, suitable for external temperature control for: (Polarimeters, refractometers, viscosimeters, etc).

Cooling coil to maintain ambient temperatures, using tap water.

External temperature control connection using a Pt 100 probe.

RS-232 interface for computer control or printing data.

External metal case with a corrosive resistant epoxy coating. All parts in contact with liquid are made of AISI 304 stainless steel.

Handles at the side and drain tap at the front.



### Control Panel

Main power switch.

LCD Display showing working parameters.

Push button configuration selector.

Push button parameter selection.

Push button increase set value.

Push button decrease set value.

Start / Stop, push button.

Models	Part No.	Temp. Max. °C	Capacity litres	Height/Width/Depth (internal) cm			Height/Width/Depth (external) cm			Pump Pres. mbar	Flow H <sub>2</sub> O l/min	Power W	Weight Kg
DIGITERM-100 20	3001291	100	20	15	30	29	20	55	35	150	12	1060	10
DIGITERM-100 27	3001292	100	27	20	30	29	25	55	35	150	12	1060	12
DIGITERM-200 20	3001293	200	20	15	30	29	20	55	35	150	12	2060	10
DIGITERM-200 27	3001294	200	27	20	30	29	25	55	35	150	12	2060	12

ACCESSORIES: For the TECTRON-BIO, TECTRON-200, DIGITERM-100, DIGITERM-200 and DIGIT-COOL. Made of AISI 304 stainless steel.



1. Gable lid.

Part No. 3001295

2. Lifting rack support. Capacity 3 tube racks.

Part No. 1001296

3. Tube racks.

Part No.	Tubes Ø mm	No. tubes	Height/Width/Depth (internal) cm		
1001202	13	36	8	8.2	23.6
1001203	16	24	8	8.2	23.6
1001204	20	24	8	8.2	23.6



## Cooling immersion unit for baths 'Digit-Cool'

ADJUSTABLE TEMPERATURE FROM -10 °C to 100 °C.  
 STABILITY: 100 °C ±0.05 °C, 0 °C ±0.05 °C, -10 °C ±0.1 °C. SET ERROR: ±0.1 °C. RESOLUTION: 0.1 °C.  
 CONFORMS TO THE DIN 12879 CLASS 2 SAFETY STANDARD.

Independent unit  
with built in compressor

### Features

- Maximum volume to achieve the working temperature limit: 26 litres.
- Minimum tank depth: 16 cm.
- Hermetically sealed CFC free compressor with built in control valve, condenser and evaporator.
- RS-232 out put for computer control or printer.
- Control and stirring built into a portable unit with lifting handle.



Part No.	Temp. Range	Height/Width/Depth (external) cm	Pump Pressure/flow rate H <sub>2</sub> O	Power W	Compressor HP	Weight Kg
3001373	0 +100	45 21 51	150 mbar / 12 l/min	1460	3/8	22

### ACCESSORIES

Stainless steel baths. Double skinned with an AISI 304 stainless steel exterior with a bath of AISI 310 stainless steel, providing thermal insulation by injecting foam insulation that prevents condensation or excessive external temperatures. Comes with a drain tap.



### Models

Part No.	Capacity litres	Height/Width/Depth (internal) cm	Height/Width/Depth (external) cm	Weight Kg
6003921	20	15 48 30	24 61 41	9
6003931	27	20 48 30	29 61 41	11

4 place ring set lid: 105, 80, 60 and 37 mm diameter reduction rings and a thermometer location hole in the lid.

Part No. 1001374



Image showing a "Digit cool" with a 4 place ring set lid.

1. Gable lid.

Part No. 3001295

2. Tube rack support. Capacity for 3 racks.

Part No. 1001296

3. Tube racks.

Part No.	Tubes Ø mm	No. tubes	Height/Width/Depth (internal) cm
1001202	13	36	8 8.2 23.6
1001203	16	24	8 8.2 23.6
1001204	20	24	8 8.2 23.6



## Accessories for Immersion Thermostats

Extension support bridge.

Made of AISI 304 stainless steel, adjustable to fit the immersion thermostat models "Tectron and "Digiterm".

The bridge can span baths of 22 to 44 cm across.

Part No. 6001092



Example showing the support bridge. Part No. 6001092.

Stainless steel baths. Double skinned with an AISI 304 stainless steel exterior and bath of AISI 310 stainless steel.

### Models

Part No.	Capacity litres	Height/Width/Depth (internal) cm	Height/Width/Depth (external) cm	Weight Kg
6000390	9	15 29 22	20 34 28	3.5
6000391	12	15 30 31	20 37 35	4.3
6000392*	20	15 48 30	20 55 35	6.6
6000393*	27	20 48 30	25 55 35	7.6
6001093*	45	15 62 50	23 70 56	11

\*With drain tap.

Stainless steel baths. Double skinned with an AISI 304 stainless steel exterior with a bath of AISI 310 stainless steel, providing thermal insulation by injecting foam insulation that prevents condensation or excessive external temperatures. Suitable for temperature from -40 °C to 90 °C.

Part No.	Capacity litres	Height/Width/Depth (internal) cm	Height/Width/Depth (external) cm	Weight Kg
6003901	9	15 29 22	24 40 34	6
6003921*	20	15 48 30	24 61 41	9
6003931*	27	20 48 30	29 61 41	11

\*With drain tap.

Methacrylate baths. Maximum temperature 60 °C.

### Models

Part No.	Capacity litres	Height/Width/Depth (external) cm	Thickness mm
1000394	8	15 18 31	6
1000544	9.5	14.5 16.5 39	6
1000395	13	15 23 40	8
1000396	30	20 30 50	8

Removable constant liquid level. Suitable for any type of bath. Not compatible with lids.

Part No.

6001400 Bath depth up to 15 cm.

6001800 Bath depth up to 20 cm.



Thermometer support. Stainless steel, suitable for mercury thermometer. Aperture up to 40 mm. Not compatible with lids. Part No. 6000896

SPARE contact thermometers.

Suitable for "Microterm".

Immersion length: 4 cm.

Scale: 0-60 °C. Divisions: 1/2 °C.

Part No. 3135264

Contact thermometer for "Termotronic"

Immersion length: 4 cm

Scale 0-100 °C divisions 1/1 °C

Part No. 3135214



### Immersion thermostats



Suitable for "Microterm and Termotronic", Scale 0-100 °C Part No. 1000872

Suitable for "Tectron-Bio". Scale 0-100 °C Part No. 3009100

Suitable for the "Tectron 200". Scale 0-200 °C Part No. 3009200